

York Road
Richmond
TW10 6DR

£875,000

ChaseBuchanan



York Road TW10

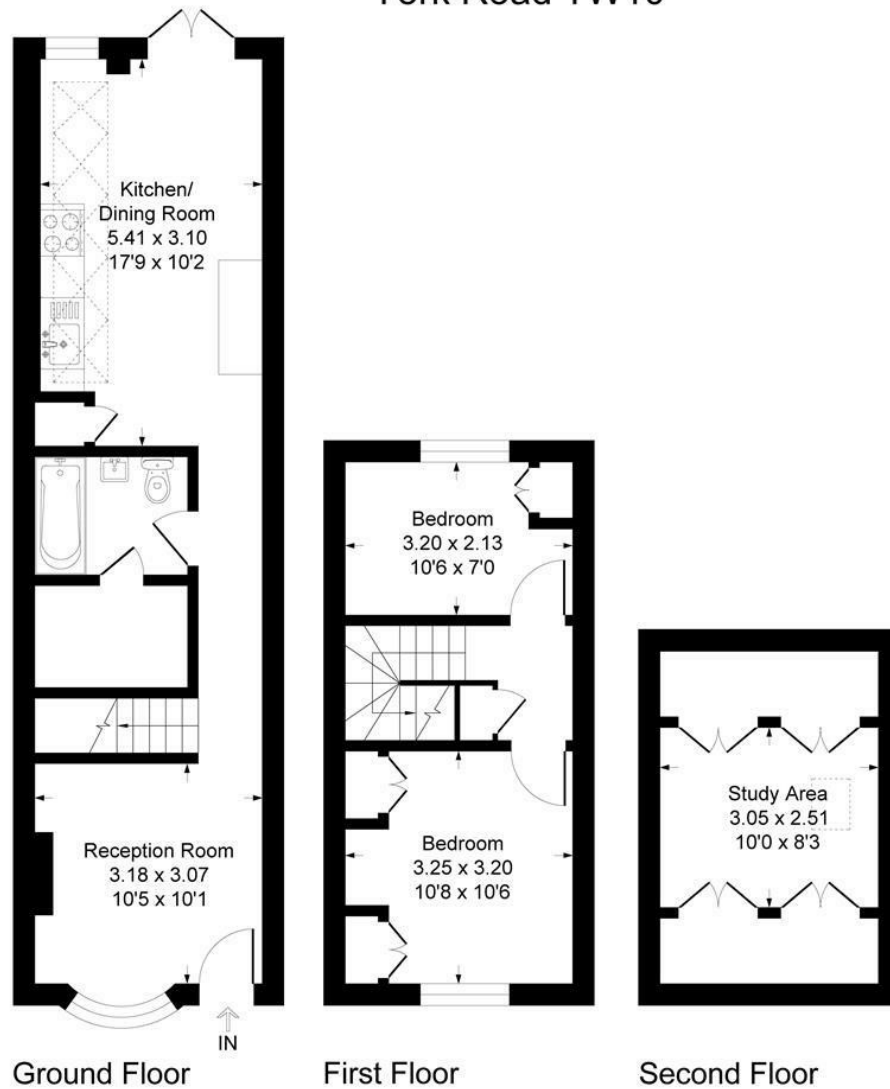
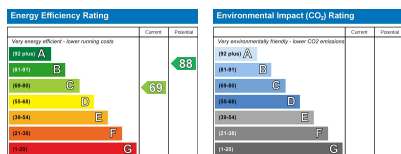


Illustration for identification purposes only, measurements are approximate, not to scale.



Care has been taken in the preparation of these particulars, however, their accuracy is not guaranteed and they do not form part of any contract. Measurements stated must be considered maximum.

- Viewings accompanied by Chase Buchanan
- Outstanding architecturally extended Victorian cottage
- Exceptional location in Richmond upon Thames
- Immaculately presented
- Study area in loft space and an abundance of storage
- Secluded and landscaped rear garden
- "The Alberts", Richmond
- Excellent transport links nearby
- The River Thames is in close proximity
- Close to Royal Richmond Park

Situated in the heart of 'The Alberts', one of the most desirable parts of Richmond-upon-Thames, is this fabulous and beautifully presented extended cottage.

This gorgeous home boasts an abundance of entertaining space, in the shape of a formal drawing room, with 'Amtico' flooring, 'Bisque' style radiators, pretty feature fireplace, bespoke bookcases and a recently fitted, fully-loaded kitchen/breakfast room with ample food preparation areas and integrated appliances, leading to the larger than average garden, perfect for barbeques and al fresco dining. The kitchen has been completely redesigned and enhanced by our clients – It's simply magnificent.

We also find two double bedrooms and a particularly stylish family bathroom, with 'Burlington' sanitary ware with a full size bathtub and shower over – It's a lovely bathroom. Then, built into the loft space is a sizable study area and masses of storage to the eaves.

The landscaped garden will enjoy evening sunsets to the West and it is particularly secluded.

The residents in 'The Alberts' enjoy so much on their doorstep including, the River Thames and its glorious and enchanting towpath walks, the Royal Richmond Park and its green open spaces, the charming lanes, adjacent to Richmond Green, where you'll find an abundance of restaurants and independent shops and of course, the bustling town centre and Richmond station.

Additionally, the immediate area is renowned for outstanding schools and great access, by road and rail, in and out of London.

This tremendous cottage is nestled in a very pretty row of houses, in a particularly desirable no-through-road and comes highly recommended.

For more information or to book a viewing, please contact:

020 8948 1331

ChaseBuchanan

20 Red Lion Street, Richmond, TW9 1RW